

Nome do animal VERMUTE TE IT			Proprietário: 216 - Fazenda Perfeita União / Tarcisus Galvão Tonetto		
			Criador: 216 - Fazenda Perfeita União / Tarcisus Galvão Tonetto		
Série	RGN	RGD	Raça	Categoria	Variedade
ITG	3097		Guzerá	PO	Padrão
Central			Reprodução Programada		
Sexo		Situação		Dt. Nasc.	
Macho		Inativo		07/05/2009	
MGTe		TOP			
14.17 @35		@ 4%			

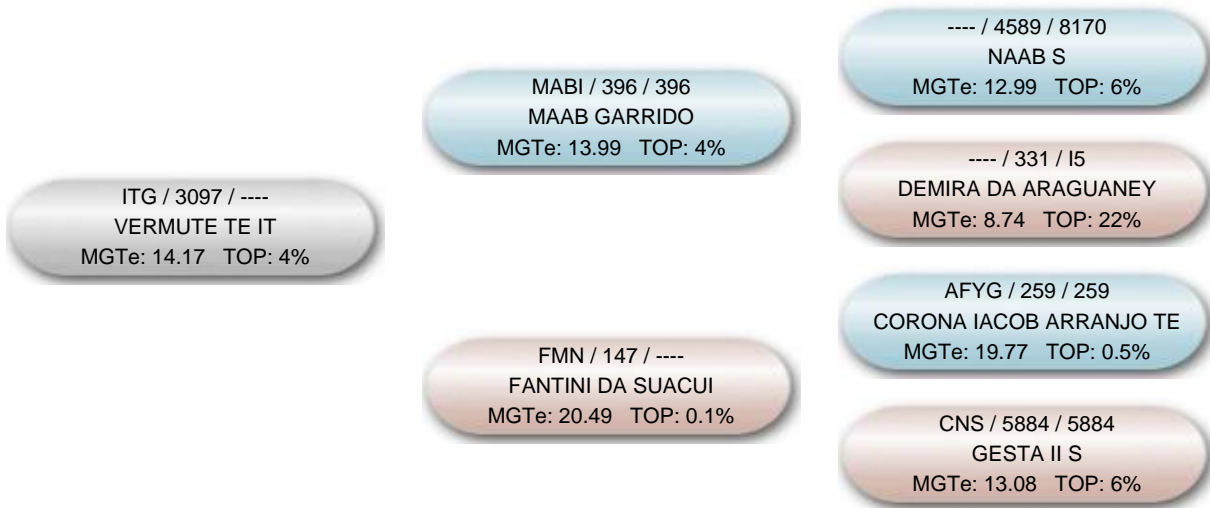
DIPP -0.57 @ 18 ® 15%	D3P	DIPM	MP120 3.59 @ 18 ® 0.5%	MP210 4.59 @ 18 ® 1%	MTP120 6.36 @ 24 ® 1%	MTP210 8.99 @ 25 ® 2%	DSTAY 48.97 @ 25 ® 84%	DPAC 3.51 @ 8 ® 4%
DPG 1.13 @ 22 ® 92%	DPN 0.80 @ 48 ® 68%	DP120 5.54 @ 36 ® 8%	DP210 8.79 @ 38 ® 8%	DP365 17.04 @ 43 ® 5%	DP450 22.34 @ 43 ® 2%	DPAV 17.08 @ 5 ® 82%	DCAR -0.011 @ 32 ® 31%	DIMS 0.123 @ 38 ® 93%
DPE365 0.60 @ 34 ® 8%	DPE450 0.34 @ 34 ® 30%	DAOL -0.96 @ 41 ® 98%	DACAB 0.46 @ 38 ® 0.5%	DMAR	DMAC	DPCQ	DPPC	DED
DPD	DMD	DES	DPS	DMS	DALT			

@: Acurácia ®: TOP DEP G: DEP Genômica

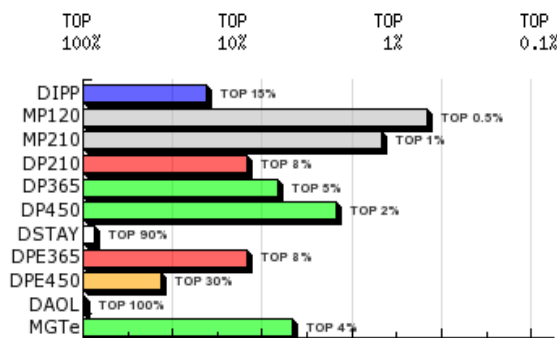
Em destaque DEPs que compõe o MGTe

NF3P	NN120	NRN120	NFSTAY	NF120	NR120	NF210	NR210	NF450	NR450	NFUS	NRUS	NFSAMS
0	13	2	10	13	2	12	2	9	2	15	1	0

Genealogia



DEPs Gráficas



- ◆ Diamante - TOP 1%
- ◆ Esmeralda - TOP 5%
- ◆ Rubi - TOP 10%
- ◆ Safira - TOP 20%
- ◆ Topázio Imperial - TOP 30%
- ◆ TOP maiores 30%